



invivo[®]

INSTRUCTIONS

H. pylori
Stool Antigen

Please read all instructions
carefully before beginning

PATIENT PREPARATION

It is not recommended that you change any prescribed or regular medications or supplements without seeking advice from a suitably qualified medical professional. Some medications or supplements are known to have an impact on the test results. If agreed with your healthcare professional, please follow the guidelines below.

PREPARATION

14 DAYS BEFORE COLLECTING SAMPLE

1. **Complete** (where possible) any courses of short term medications such as antibiotics.

24 HOURS BEFORE COLLECTING SAMPLE

1. **Discontinue** (where possible) over the counter stomach acid aids such as Rennies or Gaviscon.

NOTE

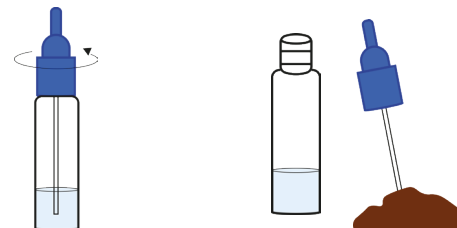
- + Long term use of medications that lower stomach acid, such as proton pump inhibitors can lower the levels of *Helicobacter pylori* that grow. Speak to your healthcare provider if this is still the right test for you.

CHECKLIST

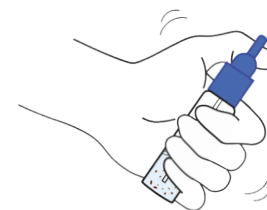
- Complete Easy-Card *H. pylori* Antigen device.
- Make note of and tick your corresponding result on the Test Requisition Form.
- Place your antigen device onto your Test Requisition Form on a flat surface within the indicated box next to your ticked positive result.
- Take a photo of the entire Test Requisition Form with the antigen device facing upwards in the bounding box clearly showing your result (this helps us confirm your result against your name so we can make a report).
- Make sure you dispose of the *H. pylori* device and liquid (as shown on facing page)
- Scan the QR code below or the top right of the Test Requisition Form to upload the photo of your result so we may generate a report for you to send on to your healthcare provider. Our report turnaround time is 15 working days. Please note you may also self report your results to your healthcare provider in the interim.

H. pylori ANTIGEN DEVICE INSTRUCTIONS

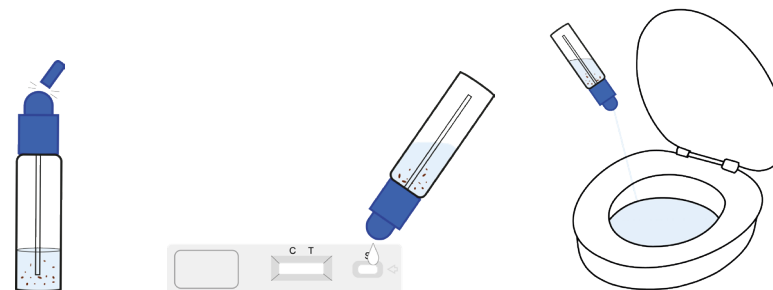
1. Unscrew the blue top of the stool collection tube.
2. Insert the tip of the stool collection tube into the stool sample at a depth of 1cm. Repeat this collection procedure **3 times in 3 separate locations** of the stool. Take care not to spill any of the liquid in the collection tube.



3. Insert the stool collection tip back into the stool collection tube & screw closed. Take care to avoid any external contamination of the device. **Shake the tube in order to ensure good sample dispersion.**



4. Remove the Easy-Card *H. pylori* Antigen device from its sealed bag just before using.
5. **Tear/snap off the top** of the stool collection tube.
6. **Dispense exactly 4 drops** into the circular window marked with an arrow, avoiding the addition of solid particles with the liquid.
7. **Dispose of the rest of the liquid** in the stool collection tube into the toilet.



Instructions continue overleaf →



- Our report turnaround time is 15 working days. Please note you may also self report

